



Volume 14, Issue 1
Spring 2022

W6064 N. Stone Lake Rd., PO Box 174, Stone Lake, WI 54876
deeplake1@centurytel.net

2022-2023 OFFICERS

President:

Connie Schield (715) 865-4940

Vice President:

Rose Rhea (715) 865-3922

Secretary:

Barbara Derring (715) 865-4785

Treasurer:

Joan Rainville..... (715) 558-8013

Directors:

Carol McDonnell (715) 865-5091

Vi Myer (715) 865-5600

Judy Holmes..... (715) 865-3005

Jeri Jacoby (715) 558-3431

Website:

www.stonelakeareahistoricalsociety.com

Digitalization site:

<http://recollectionwisconsin.org>

STONE LAKE AREA HISTORICAL SOCIETY EVENTS FOR 2022

- **Sunday, May 15th** – Spring Dinner at Stone Lake Fire Hall 4:30pm - 7:00pm
- **Museum opens for season Friday, May 27th** – Friday thru Sunday, noon - 4:00pm
- **Thursday, June 16th** – Volunteer Appreciation Night - anyone who has volunteered at museum activities and/or would like to volunteer now is welcome! 6:00pm-8:00pm, refreshments served.
- **Tuesday, June 28th** – Author Jeff Nania will speak about his three mystery books about the Hayward area. Stone Lake Town Hall at 7:00pm. Free admission with refreshments served free of charge.
- **Children's Day Schedules** with local Bible school.
- **Sunday, July 10th** – Pie and Ice Cream Social at Lions Park, 12:30pm-3:00pm. Music provided by the Good Medicine Band. 25th Anniversary Celebration of the incorporation of the Stone Lake Area Historical Society.
- **Tuesday, September 13th** – Stone Laker Night at the museum, 5:00pm-7:00pm. Please bring your children!
- **Museum closes for season Saturday, October 1st**



HISTORY OF THE STONE LAKE AREA HISTORICAL SOCIETY -

published with permission of Carol McDonnell from her Stone Lake Historical album

STONE LAKE AREA HISTORICAL SOCIETY...

In 1979, Alberta Boylan approached the Stone Lake Women's Club in regard to supporting a Historical Society. When the Historical Society formed, it became a chapter under the Sawyer County Historical Society.

As the organization grew, members from Stone Lake, Washburn County, soon joined. In 1996, the Historical Society dissolved their chapter with Sawyer County and became the Stone Lake Area Historical Society, under the State of Wisconsin Historical Society.

In 1997, the Society signed a 99-year lease with the Township of Stone Lake for the use of their old town hall for a museum. In May 1998, the doors to the museum were opened.

The Society's motto, "Preserving the Past for the Future" has definitely shown growth, as the existing museum is now bursting at the seams with items donated. The museum is located on Slayton Road, approximately 2 miles west of town. It was built in 1908 at the center of the township, and has electricity but no running water. It was

used as is for meetings and elections until 1997, when a new Town Hall was built.

The present Board of Directors for the Historical Society are: Barbara Ruprecht, President; Betty Lester, Vice President; Betty Helwig, Treasurer; Rosemarie Bradley, Secretary; and Directors Eunice McCamy, Robert Lester and Jack Coddington. The information above was obtained from the minutes of the Stone Lake Area Historical Society.





Red Schoolhouse Wines
5768 N. 4th Street • Stone Lake, WI
715-865-5038

Great Wines, Micro Brews & Spirits at affordable prices.
Step back in time and enjoy a great glass of wine in our 1870's schoolhouse.
Wine by the glass, bottle or case, microbrews, unique gift ideas and great food items.
Private parties by reservation. Seasonal hours.

www.RedSchoolhouseWines.com

ANTIQUES



Things Remembered
N 5077 Dawn Road
Stone Lake, WI
715-865-5600

If depression glass is your passion, be sure to circle this shop on your map! Vi Myer welcomes you to tour this small shop just outside of Stone Lake. Set in the pines, her country shop features depression glass, collectibles, furniture, gifts and ceramics.
3 Miles west of Stone Lake on 70 to Dawn Road.
Open 7 Days a Week 9am-5pm, May-October.

Stone Lake Paint & Hardware
Veteran owned and operated!

Competitive prices with exceptional service!

Located in the heart of Stone Lake, Wisconsin...

16869 W. Main Street PO BOX 157
Stone Lake, Wisconsin 54876

Phone - 715-865-2201
Fax- 715-865-2842

Northwest Wisconsin Realty TEAM
Conveniently located downtown Stone Lake on Hwy 70 & Main



**WATERFRONT • RESIDENTIAL
VACANT LAND • COMMERCIAL**
SERVING SELLERS AND BUYERS NEEDS IN ALL OF
NW WISCONSIN AND CENTRAL MNI!

www.nwwirealty.com
715-865-2315

Check us out on Facebook & Instagram!
Bringing Buyers and Sellers Together!

PRESERVING THE PAST FOR THE FUTURE

*Stone Lake Area Historical Society celebrates 25 years of incorporation with the
Wisconsin State Historical Society*

Certificate of Adoption - January 24, 1997



Marie Langham



Ruth Schobel

CERTIFICATE OF ADOPTION

It is hereby certified that the foregoing bylaws of this corporation
were adopted by STONE LAKE AREA HISTORICAL SOCIETY
meeting at STONE LAKE, Wisconsin on the 24th day of January 1997 by
the following vote:

Number of members having voting rights 28

Number voting in person or by proxy 18
(In person 6; by proxy 12)

Number voting for 18; Number voting against 0.

Marie Langham

President

Ruth A. Schobel

Secretary

HAVE YOU VISITED THE EVERGREEN CEMETERY IN STONE LAKE?

The Stone Lake Area Historical Society Museum has a master list of cemetery plots and copies of the cemetery map which are available free of charge.

Driving directions to the cemetery: go west on Hwy 70 and just over the bridge, turn left on BB. Drive approximately 1/2 mile and turn left at the Evergreen Cemetery sign.

Two early Stone Lake pioneers, Harold Hartz and George Didier, took care of Evergreen Cemetery together for more than 20 years. They began by completing a most unusual and essential activity. They set the stakes on every lot in the cemetery, using the original survey map and many wheelbarrows full of steel stakes. These stakes are the same stakes you will find today, buried at the four corners of every lot. It took 21 hours for George to mow the cemetery with his hand mower. Harold Hartz, the grave digger, dug 55 graves after he reached the age of 70 and he had no idea how many he dug before age 70.



FREE WIFI



THE WHISTLE PUNK
CRAFT BEER & COFFEE BAR

**THE NORTHWOOD'S ORIGINAL NITRO COFFEE ON TAP
HAND SELECTED, ROTATING CRAFT BEER**

FOLLOW US ON FACEBOOK FOR FUN EVENTS

WWW.THEWHISTLEPUNK.COM

W170 HIGHWAY 70 STONE LAKE, WI | 715-957-0222



Stone Lake Lumber Co.
Paul Manka Sr.
President/Owner
715-761-1811
Paul@stonelakelumberllc.com
www.stonelakelumberllc.com



Red Schoolhouse Wines
5768 N. 4th Street • Stone Lake, WI
715-865-5038

Great Wines, Micro Brews & Spirits at affordable prices.

Step back in time and enjoy a great glass of wine in our 1870's schoolhouse.

Wine by the glass, bottle or case, microbrews, unique gift ideas and great food items.

Private parties by reservation. Seasonal hours.

www.RedSchoolhouseWines.com

Stone Lake Community Wetland Park
ENTRANCE LOCATED AT HWY 70 AND 3RD ST. NORTH



Hike wooded trails and wetland boardwalk, enjoy picnic areas, memorial brick pathway and gazebo overlooking Stone Lake.

Wetlands for everyone to enjoy and protect!

HOW TO PURCHASE A CEMETERY LOT IN EVERGREEN CEMETERY

Please contact Judy Paine (Secretary), 715-865-2546; or Wanda Coddington (Treasurer), 715-558-6897. They will be able to help you with your purchase.

HOW TO LOCATE YOUR EVERGREEN CEMETERY PLOT

Evergreen Cemetery consists of Blocks 1 through 5, and a circle drive with parking on the right.

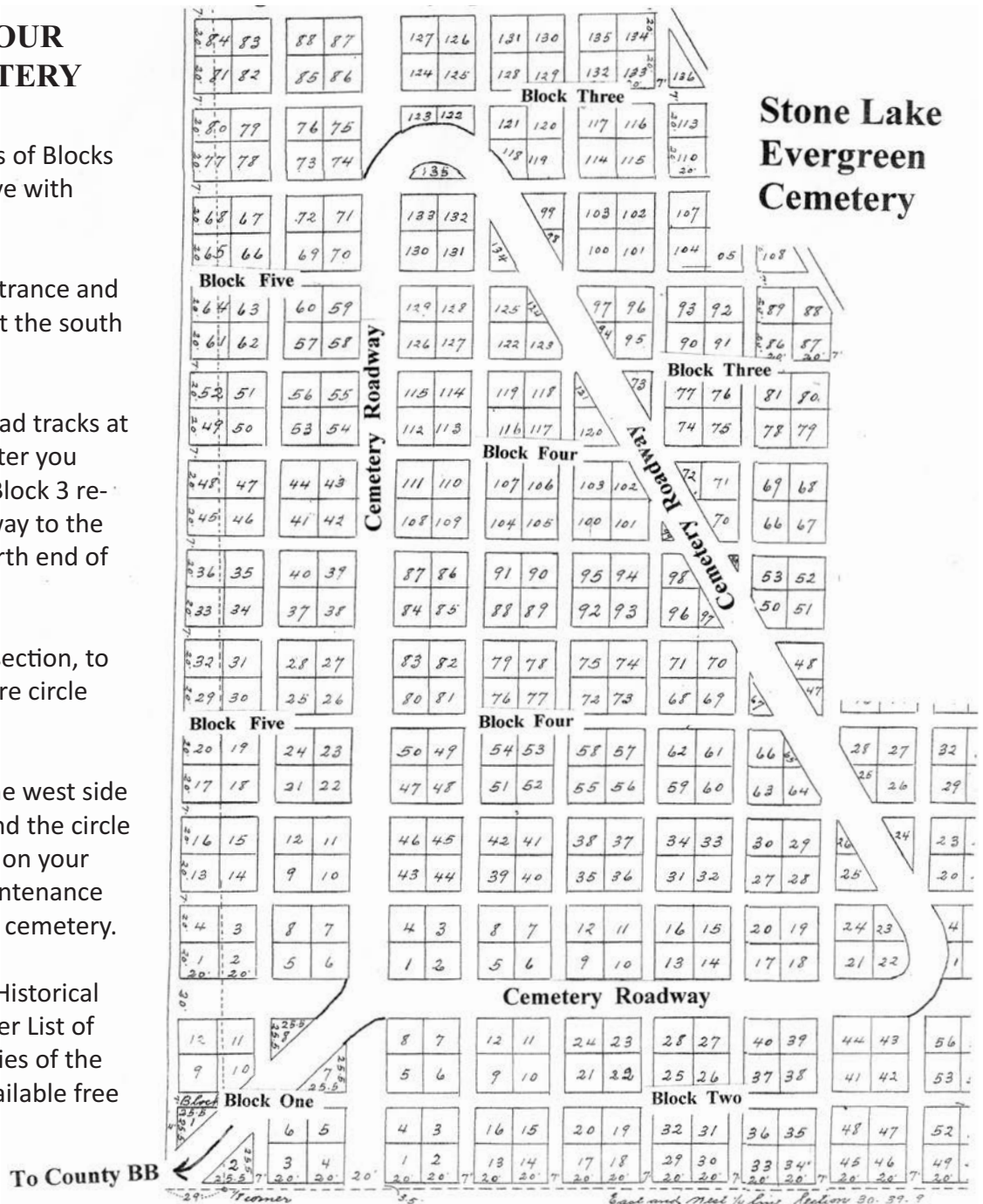
Blocks 1 & 2 begin at the entrance and are on the right hand side, at the south end of the cemetery.

Block 3 runs along the railroad tracks at the right side of the road, after you bear left on the first curve. Block 3 remains on your right all the way to the maintenance road at the north end of the cemetery.

Block 4 is the entire center section, to the left as you drive the entire circle drive through the cemetery.

Block 5 runs the length of the west side of the cemetery. Drive around the circle (Block 4) and Block 5 will be on your right, after you pass the maintenance road at the north end of the cemetery.

NOTE: The Stone Lake Area Historical Society Museum has a Master List of the cemetery plots, and copies of the cemetery map which are available free of charge.



KURT LOFGREN

Realtor®
715-456-2248



COLDWELL BANKER

REAL ESTATE
CONSULTANTS

C: (715) 456-2248
O: (715) 634-7979
E: kurtlofgren@hotmail.com

COLDWELL BANKER
REAL ESTATE
CONSULTANTS INC.



**Beechmoor
Restaurant
& Lounge on Whitefish Lake**

15294 W. State Road 27/70
Stone Lake, WI

715-865-2482

The Beechmoor Restaurant & Lounge is located on beautiful Whitefish Lake. "Where good friends meet!" Always offering a nightly special. Outdoor Dining - Weather Permitting.

www.beechmoor.com

You are invited to attend an evening with
WISCONSIN AWARD-WINNING AUTHOR JEFF NANIA

Escape to the northwoods in an award-winning tale of murder and deceit, family and traditions, redemption and second chances. Retreating to a lake cabin after a traumatic accident in the line of duty, John Cabrelli unravels a mystery that could forever change the landscape.

You are invited to attend an evening with Wisconsin resident (Spider Lake) and Award Winning author Jeff Nania on Tuesday, June 28th at the Stone Lake Town Hall, Stone Lake Road (behind the museum and fire department) at 7:00pm. Free admission and refreshments served.

Jeff uses his careers in law enforcement and conservation as the background for these three John Cabrelli northwoods mysteries. The third novel, *Figure Eight*, won the 2021 Midwest Independent Publishers Association award.



BALLOU FAMILY HISTORY ON LITTLE SISSABAGAMA

*Written by Dianne Nelson, Anne Skwira-Brown, and Jean Accola for the
Little Sissabagama Fall 2021 Newsletter*

In the late 1800's, my Great Uncle Bill Ballou was living in Stone Lake, WI when he discovered Little Sissabagama. He convinced his flourishing attorney brothers, Ellis and Ben (my grandfather) to buy lakeshore property that was 268 miles from their homes in Fairmont, MN. With the help of men from the area, the cabin was built using only hand tools. The original cabin still stands in the same location along with the boat house but minus the "biff" as we called the outhouse. This is the cabin my parents, Bill and still Beebe Ballou, my sister Cynthia and my brother Ben and I used all the years we were growing up. My cousin Joy Poulakidas, who lives in Chicago, now owns the cabin with her two sons Nik and Brian. A favorite memory from cabin time is my Dad getting up early in the morning, taking the rowboat fishing and coming back with enough crappies and sunnies for breakfast. He had a spot in the woods where he cleaned the fish while my sister and I fanned him with ferns to keep the bugs away. We rarely saw people other than the occasional fisherman. The Gerlach family was on the island and the Haberrkorn's had their place. According to an old map, other cabins were owned by the Ogren's, Hilt's and Serlays. In 1964, my Grandmother, Emma Ballou, sold 240 feet of lakeshore to my Dad for \$1.00. Repeating history, my Dad, my brother and cousin Brian (Joy's Dad), built our cabin with only hand tools. Our family cabin stands as sound and sturdy as it did when it was built 56 years ago. In the early days, we had no electricity, only kerosene lamps, a two-burner camp stove and no running water. We made lots of trips down the hill and back up with our buckets full of lake water for clean-ups, and yes, even for coffee! We had a "biff" for many years with lots of interesting stories which we still talk about. When we finally had electricity, part of our routine included trips to Edgewater to get big blocks of ice for the "ice box" and water from the spring along the way. No doubt it is noticeable from the lake as to how our cabin has expanded. With my three daughters and their husbands, Molly and Zak Tomczak, Elizabeth and Chuck Pamperin, Stacey Degan and Brian Gaiser, grandchildren Alex, Cody and his wife Danielle, Samantha and Ryan AND great-grandson Callen, six dogs and one cat, expansion was necessary! It can be complete chaos at times, but oh how we all love it and are so grateful to our family who, so long ago, found our beautiful Little Sissabagama. It is our place to connect with each other, laugh, work together, sit around the bonfire or on the deck and remember our Mom and Dad, Gram and Papa. Being there, they don't seem so far away.

- Dianne Nelson

WE ARE LOOKING FOR MORE FAMILY HISTORIES!

If you have one to share, please send to Connie Schield at P.O. Box 35, Stone Lake, WI 54876



The Stone Lake Depot/Museum,
1913 Soo Line Caboose, 1926 Town Hall,
and Little Free Library

PLEASE CONSIDER VOLUNTEERING!

The Stone Lake Area Historical Society Museum Complex is open 20 weekends a year Friday–Sunday 12:00-4:00 pm. We try to have two people there at all times but some people like to be there alone. We need your help to staff the museum for these days! We will provide training for you. Our guests like to be welcomed and our greeters ask them what they are interested in and point them in the right direction. Jeri Jacoby has the most difficult job on the museum board because she has to make sure we have the required greeters each week. Please consider volunteering this summer!



Please complete this form and mail to:
Connie Schield, PO Box 35,
Stone Lake, WI 54876.
Jeri Jacoby will contact you.

☐ I (we) will volunteer as Greeter(s) this summer.

☐ I prefer working on a Fri. _____ Sat. _____ Sun. _____

Which month is better for you? May _____ June _____ July _____ Aug _____ Sept _____

Your name(s): _____ Phone: _____

Address: _____

_____ I would like to help maintain the flower garden at the museum.

_____ I would like to help maintain the museum by painting, etc.

Thanks so much for volunteering!

Railroad Room

This room has the original bay window from the depot. This enabled the station agent to see the track in both directions.

Large 1908 map of Wisconsin railroads on right wall.

Howe scale used to weigh freight, travel cases and variety of railroad lanterns and signs.

Photos taken when the depot was in operation for the SOO Line Railroad.

Pictures of this depot as it deteriorated before it was saved and moved by Norman Skille.

Teletype machine on the large green desk used by the SOO Line Station Agent.

The original Stone Lake Depot roll-top desk with books on railroad history for your reference.

Original tariff box hanging on the wall. Tariffs were changed daily.

Glass display with railroad china and tablecloths.

Hanging from the ceiling are two of the first Stone Lake newspapers: Stone Lake Sun and the Stone Lake News.

Many original photos of Stone Lake men working at this depot.

Original 1926 Stone Lake Town Hall

There are many interesting old maps of the Sawyer County area in this room.

Quilts – 1913 “mystery quilt” with signatures of Stone Lake women and a quilt made by First Lutheran Church in 1934 for a fund-raiser.

Two wall murals of historic Stone Lake done by Rockford artist Chris Pielak.

Glass displays of 19th C. school ledgers and tax assessment rolls. Many Stone Lake pioneer family names can be seen on these documents.

Charles Winter, founder of Pine Ridge resort for the SOO Line, glass negatives from his post WWI service in Manchuria and Siberia.

Pictures and memorabilia from Stone Lake National Bank and the Quinn family.

Stone Lake Citizens Patrol memorabilia

Flip chart of Stone Lake Township history including Mackey Valley.

Original cast iron stove from the 1926 Town Hall.

Two voting booths in the Town Hall with original ballots displayed on walls.

Stone Lake Post Office history with pictures and old postal equipment.



VISITOR'S GUIDE TO THE STONE LAKE AREA MUSEUM COMPLEX

1911 SOO Line Railroad Depot

1926 Stone Lake Town Hall

1913 #593 SOO Line Caboose

Stone Lake Area Historical Society

N6064 Stone Lake Rd. (on Hwy 70 N of town)

Stone Lake, WI 54876

Open Memorial Day – first Saturday in October

Friday – Sunday 12:00 – 4:00

Please call for private tours: 715-865-4940

www.stonelakeareahistoricalociety.net

<http://recollectionwisconsin.org>

SOO Line Depot Passenger Waiting Room

Waiting room benches for your use while visiting the museum complex.

Shelf with interesting individual family histories in notebooks and books for your reading!

Flip chart on left wall has history of early Stone Lake pioneer families, schools, churches and organizations; pictures of depot and caboose being moved and refurbished.

Military history on walls and on shelf. Flip chart with pictures and information on the 1966 B-52 crash in Stone Lake with crash debris on floor.

Evergreen Cemetery master book and maps of cemetery available upon request. Funeral card notebook.

File with local family histories. Please ask for a family history form if you would like to include your family in this file.

Local resort history and pictures on wall and in flip chart; many old resort brochures and memories.

Logging pictures from the area with a display of handmade miniature logging equipment.

Large display of 1966 B-52 crash debris and flipchart with maps & pictures of crash site.

Page 1

Freight Room

Flip chart with Sand Lake families, officials, Stone Lake Fire Department and Citizens Patrol pictures.

Stone Lake Elementary school pictures and memorabilia. School was closed in 2011.

Shadow box with old empty liquor bottles found within the walls of the Freight Room.

Shelves of Mason jars collected by Stone Lake woman who dug deep into pioneer dump sites.

Beautiful vintage clothing worn by local women.

Local Stone Lake church history with old hymnals and Bibles. Original doors from First Lutheran Church. Clawson family Bible.

Large pump organ with an interesting history.

Cranberry corner with assortment of old harvesting equipment; displays of Cranfest pictures and buttons. Flip chart with history of local family-owned cranberry marshes and history of Cranfest.

Large apple cider press

Amanda Windsor Parlor Stove

Wall display of old farm tools.

Vintage kitchen with stove, washing machines.

Page 3

Preservation Hall

Flip chart with pictorial histories of many Stone Lake pioneer families, pictures of Charlie Meyenburg stonework and early pictures of the Isle of Pines on Little Sissabagama Lake.

Pictures of Stone Lake and Sand Lake Township officials.

Glass cabinet with pictures of Bobby Schmidt and his resort items.

Cabinets with old children's toys, Boy Scouts and Girl Scout memorabilia.

Plaques on the walls commemorate people who have helped both financially and through volunteer activities to make this museum possible.

1926 Stone Lake Town Hall (back page)

After you leave the museum, please notice the Jordan School bell on the front lawn. The school opened in 1927 on Hwy 27 North.

Climb the steep steps to visit the 1913 #593 caboose and notice the original outhouse for the 1926 Town Hall (not functional)!

Page 4

2022 MEMBERSHIP RENEWAL

Name: _____

Address: _____

City: _____ State: _____ Zip: _____

Email Address: _____

Phone: _____

[] \$100 Family Lifetime Membership

[] \$25 Family Annual Membership • [] \$10 Annual Single Membership

*Please return this form with your check and the volunteer form on the next page to:
Connie Schield, PO Box 174, Stone Lake, WI 54876*

SLAHS ANNUAL MEMBERSHIP RENEWAL

Annual memberships in the Stone Lake Area Historical Society begin on April 1, 2022. We NEED memberships in order to maintain the beautiful Depot Museum Complex.

Current members will find a ballot for the Stone Lake Area Historical Society Board in this newsletter. Please return to the address given.

Please consider becoming a new member or by renewing your membership with the form below. Checks should be made out to the **Stone Lake Area Historical Society**.

Please update your address per our records.



Stone Lake Area Historical Society
P.O. Box 174
Stone Lake, WI 54876

**THANK YOU FOR BECOMING A MEMBER
AND FOR SUPPORTING OUR EVENTS.**

**Proceeds pay the yearly operating expenses of the
Stone Lake Area Historical Society.**



<https://smile.amazon.com/stonelakeareahistoricalsociety>